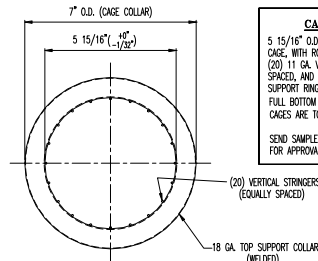
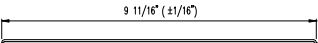


BAG DESCRIPTION
 FABRIC STYLE BAG, WITH V-GROOVE SNAP BAND TOP, TO FIT 6.279" DIAMETER TUBE SHEET HOLE, SEPARATE 3 1/2" TOP CUFF AND 3" BOTTOM CUFF. CUFF MATERIAL TO BE SAME AS BAG MATERIAL.
 SEND SAMPLE TO ETS INC. FOR APPROVAL.

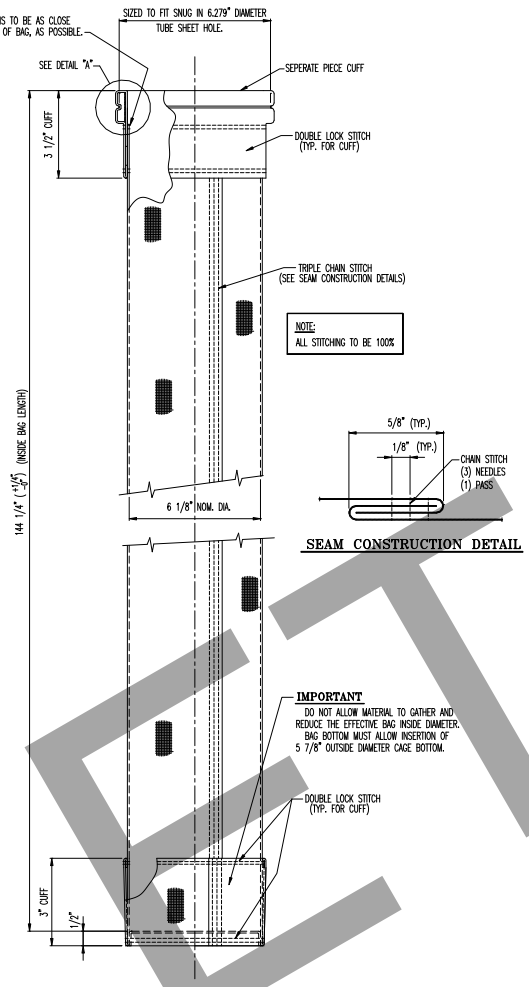


CAGE DESCRIPTION
 5 15/16" O.D. x 144" LG. WIRE FORMED CAGE WITH ROLLED TOP FLANGE. (20) 11 GA. VERTICAL WIRE STRINGERS, EQUALLY SPACED, AND (17) 11 GA. HORIZONTAL WIRE SUPPORT RINGS, SPA. ON 8" CENTERS, WITH FULL BOTTOM CUF. CAGES ARE TO BE MADE OF CARBON STEEL.
 SEND SAMPLE TO ETS INC. FOR APPROVAL.

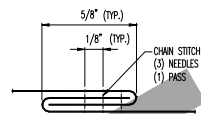
FABRIC SPECIFICATION		
FABRIC TYPE	WOVEN FIBERGLASS	
MEMBRANE TYPE	PIFE (WARP SIDE)	
WEIGHT	22-27 OZ/YD ²	
TYPE OF WEAVE	3 x 1 (DOUBLE FILLING FACE)	
YARN COUNT	48 WARP #2 x 40 FILL #2	
YARN DESIGNATION	WARP	ECOE 75 1/2 FILAMENT
	FILL	ECOE 75 1/4 TEXTURED
FINISH	1-626 ADD RESISTANT 3.7-5.58 ADD ON	
PERMEABILITY	5-7 COU. FT. GAS PER SQ. FT. CLOTH @ 0.5 IN. W.G.	
TENSILE STRENGTH	WARP	500 LBS./IN. (MIN.)
	FILL	350 LBS./IN. (MIN.)
MULLER BURST	800 PSI (MIN.)	
MFT FLEX	(REF. ONLY)	
FILTRATION	(REF. ONLY)	
MICROSCOPIC	(REF. ONLY)	

THREAD SPECIFICATION	
THREAD TYPE	E-12 FIBERGLASS, TEFLON COATED
SIZE	EOB 150 2/2
DIAMETER	NOMINAL 0.014 IN.
BREAK STRENGTH	12 LB. MIN.
PIFE ORGANIC CONTENT (LO)	14% MIN.
TFI	APPROXIMATELY 9.6 - 7-

NOTE:
 STITCH IS TO BE AS CLOSE TO TOP OF BAG, AS POSSIBLE.

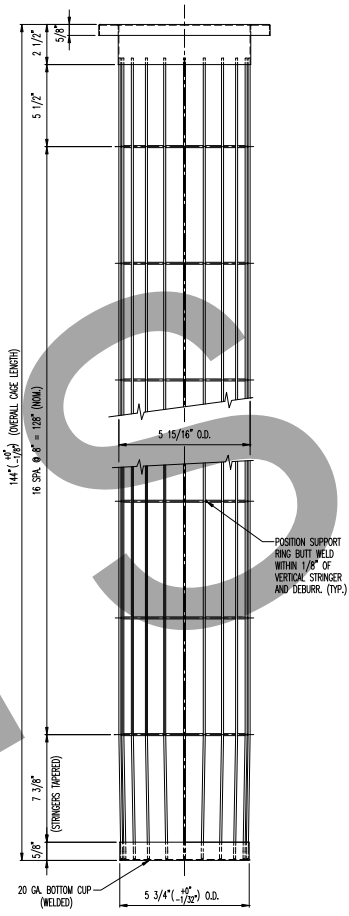


NOTE:
 ALL STITCHING TO BE 100%

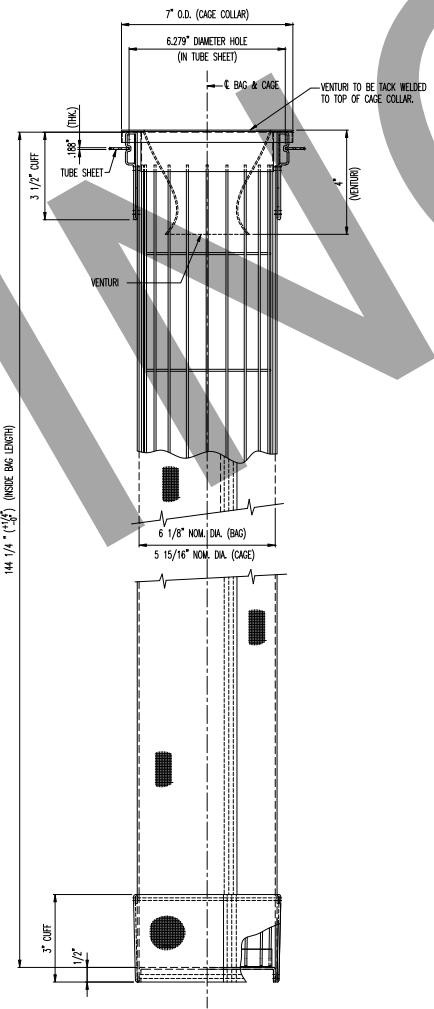


IMPORTANT
 DO NOT ALLOW MATERIAL TO GATHER AND REDUCE THE EFFECTIVE BAG INSIDE DIAMETER. BAG BOTTOM MUST ALLOW INSERTION OF 5 7/8" OUTSIDE DIAMETER CAGE BOTTOM.

TOP VIEW



CAGE DETAIL



BAG & CAGE ASSEMBLY

NOTE:
 ALL DIMENSIONS ARE TO HAVE (+/-) 1/32" TOLERANCE, UNLESS OTHERWISE NOTED.

NO.	DATE	REVISION	DWN/CHEK
ETS, INC. 1401 MUNICIPAL ROAD, NW ROANOKE, VA. 24012-1309			
TELEPHONE: (540) 265-0004 FAX: (540) 265-0131 E-mail: jmd@etsi-inc.com			
PULSE JET BAG & CAGE DETAILS (WOVEN FIBERGLASS/PTFE)			
CUSTOMER		CUSTOMER JOB NO.	
LOCATION:		ETS JOB NO.	
CUSTOMER P.O.		DATE	
DWN BY		DRAWING	
SCALE: NONE		REV.	
THIS DRAWING IS THE PROPERTY OF ETS, INC. IT IS NOT TO BE COPIED, REPRODUCED OR USED FOR ANY PURPOSE DETRIMENTAL TO THE INTEREST OF THE ABOVE COMPANY.			